

# Arbejdsdokument til informationssøgningen (søgeprotokol)

Anvendes ved systematisk søgning

## Problemstilling

Konkret forskningsspørgsmål/problemstilling

*Viden om udeundervisning til børn med funktionsnedsættelser:*

*What does the literature reveal about outdoor education and children with NDD in special needs education settings?*

## Oversigt over aspekter og relevante søgeord

Opsplitning af problemstillingen i aspekter/blokke.

Søgeordene (herunder kontrollerede emneord) kan variere fra database til database afhængigt af databasens sprogbrug.

Aspekt 1	Aspekt 2	Aspekt 3	Aspekt 4
<b>Børn m. funktionsnedsættelse</b>	<b>Udeundervisning</b>		
funktionsnedsættelse*	Udeundervisning*		
	Udeskole*		
<b>Engelske søgeord (+ evt. andre sprog)</b>			
autism* adhd asperger "specielle behov" "Attention Deficit Hyperactivity Disorder" "Attention Deficit Disorders" "Autism Spectrum Disorders" "Cerebral palsy" "Communication Disorders" "Congenital Impairments" "Developmental Delays" "Developmental Disabilities" "Fetal Alcohol Syndrome"	"Adventure Education" "Environmental Education" "Experiential Learning" "Field Experience Programs" "Field Trips" "Outdoor Education" "Place Based Education"		

"Intellectual Disability" "Language Impairments" "Learning Disabilities" "Neurodevelopmental Disorders" "Special Needs"			
	<b>Norsk:</b> Uteskole Uteundervisning  <b>Svensk</b> (Utomhuspedagogik* uteundervisning* utomhusundervisning*		

## Kombinering af søgeord med boolske operatører

Aspekt 1		Aspekt 2		Aspekt 3
OR	AND	OR	AND	OR
OR		OR		OR
...		...		...

## Inklusions- og eksklusionskriterier

<b>Inklusionskriterier</b> <i>Disse kan i et vist omfang indgå i søgning vha afgrænsning/Limits/filtre</i>	<p>All outdoor educational experiences across outdoor adventure programs, field trips to regular curriculum school subjects provided to school-aged children with NDD.</p> <p>Studies must describe the outdoor education practice.</p> <p>The educational programs should be offered within the following special education settings: within a regular school class (inclusive environment), in a separate special class at regular schools or at separate special schools.</p>
<b>Eksklusionskriterier</b> <i>Anvendes primært i den manuelle sortering af resultater mht vurdering af relevans</i>	<p>Outdoor experiences that are not school-based, i.e. extracurricular, recreational and leisure activities</p> <p>Studies with children at preschool (&lt;5 years) or young adults &gt;21 years)</p> <p>Children with disabilities other than NDD</p>

## Valg af informationskilder

Vælg de kilder du vil anvende til at søge litteratur i forhold til dit informationsbehov:

- Databaser
- Websider & organisationer (Videnscentre; Forskningscentre...)
- Citationssøgning (Herunder referencelister fra nøglestudier vedr. forskningsspørgsmålet samt evt. tjek af citationer til nøglestudier).
- Andre metoder (Hånd søgninger i kernetidsskrifter; Kontakt til forskernetværk og forskere).

Informationskilde	Begrundelse for valget
Forskningsportal.dk	Publiceret litteratur fra universiteterne og professionsskolerne samt publikationer fra de danske videregående kunstneriske

	<p>uddannelsesinstitutioner, ministerielle institutioner og forskningscentre fra 2011 og frem. Eks. Det Nationale Forsknings- og Analysecenter for Velfærd (VIVE), Rambøll og Statens Serums Institut.</p> <p>Platformen medtages pga. den danske tradition for udeundervisning.</p>
<p>Oria.no</p> <p>Den norske Nasjonalbibliografi</p>	<p>Alle udgivelser i Norge, der hører ind under Lov om afleveringsplikt for allment tilgjengelige dokument.</p> <p>Platformen medtages pga. den stærke norske tradition for udeundervisning.</p>
<p>Swepub</p>	<p>Forskningspublikationer som er registrerede ved svenske læreranstalter og andre myndigheder. SwePub udarbejdes af National Library of Sweden.</p> <p>Platformen medtages pga. den stærke svenske tradition for udeundervisning.</p>
<p>ERIC</p>	<p>ERIC (Education Resource Information Center) er den mest omfattende og anerkendte international database indenfor det pædagogiske område</p>
<p>APA PsycINFO</p>	<p>Databasen rummer resuméer (abstracts) af litteratur med en psykologisk synsvinkel på bl.a. emnerne medicin, psykiatri, sygepleje, sociologi, uddannelse, der er relevante for problemstillingen.</p>

### Dokumentation af søgning

I forbindelse med søgning genereres ofte en søgehistorik. Søgehistorikken kan i flere databaser gemmes og udskrives. Alternativt ”**Cut-and-paste**” **søgestrengen** hertil og gem dine søgninger. Husk også at angive evt. afgrænsninger på tid m.m. (limits)

Dato	Database/kilde	Søgninger + selektionskriterier (limits)	Antal hits	Antal relevante
14.6.2023	Forskning portal.dk	<p>(udeskole* OR udeundervisning* OR "Adventure Education" OR "Environmental Education" OR "Experiential Learning" OR "Field Experience Programs" OR "Field Trips" OR "Outdoor Education" OR "Place Based Education")</p> <p>AND</p> <p>(autism* OR adhd OR add OR asperger OR "specielle behov" OR "Attention Deficit Hyperactivity Disorder" OR "Attention Deficit Disorders" OR "Autism Spectrum Disorders" OR "Cerebral palsy" OR "Communication Disorders" OR "Congenital Impairments" OR</p>	17	

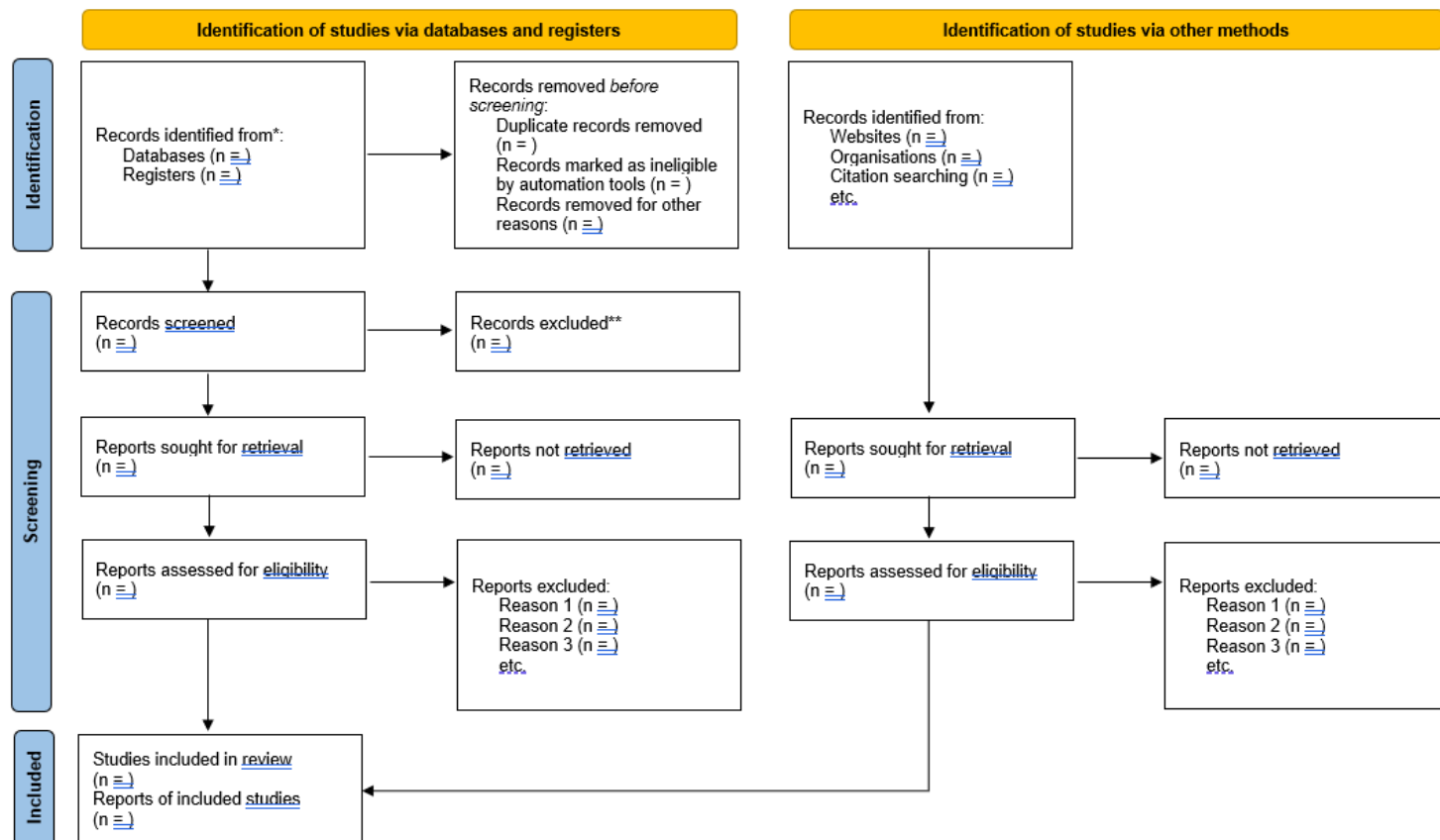
		"Developmental Delays" OR "Developmental Disabilities" OR "Fetal Alcohol Syndrome" OR "Intellectual Disability" OR "Language Impairments" OR "Learning Disabilities" OR "Neurodevelopmental Disorders" OR "Special Needs")		
14.6.20 23	Swepub	(Utomhuspedagogik* OR uteundervisning* OR utomhusundervisning* OR "outdoor education" OR "Adventure Education" OR "Environmental Education" OR "Experiential Learning" OR "Field Experience Programs" OR "Field Trips" OR "Place Based Education")  AND  ("Attention Deficit Hyperactivity Disorder" OR "Attention Deficit Disorders" OR "Autism Spectrum Disorders" OR "Cerebral palsy" OR "Communication Disorders" OR "Congenital Impairments" OR "Developmental Delays" OR "Developmental Disabilities" OR "Fetal Alcohol Syndrome" OR "Intellectual Disability" OR "Language Impairments" OR "Learning Disabilities" OR "Neurodevelopmental Disorders" OR "Special Needs" OR adhd)	1	1
14.6.20 23	Oria.no Nasjonalbi bliografien	(uteskole* OR "outdoor education" OR uteundervisning*)  Pga. begrænsede søgemuligheder i portalen, blev denne søgning screenet uden yderligere afgrænsning.	68	3
14.6.20 23	ERIC	("Attention Deficit Hyperactivity Disorder" OR "Attention Deficit Disorders" OR "Autism Spectrum Disorders" OR "Cerebral palsy" OR "Communication Disorders" OR "Congenital Impairments" OR "Developmental Delays" OR "Developmental Disabilities" OR "Fetal Alcohol Syndrome" OR "Intellectual Disability" OR "Language Impairments" OR "Learning Disabilities" OR "Neurodevelopmental Disorders" OR "Special Needs")  AND  ("Adventure Education" OR "Environmental Education" OR "Experiential Learning" OR "Field Experience Programs" OR "Field Trips" OR "Outdoor Education" OR "Place Based Education")  <b>Limiters</b> - Peer Reviewed; Date Published: 20030101- 20231231	282	22
14.6.20 03	PsycINFO	("Attention Deficit Hyperactivity Disorder" OR "Attention Deficit Disorders" OR "Autism Spectrum Disorders" OR "Cerebral palsy" OR "Communication Disorders" OR "Congenital Impairments" OR "Developmental Delays" OR "Developmental Disabilities" OR "Fetal Alcohol Syndrome" OR "Intellectual Disability" OR "Language Impairments"	69	13

		<p>OR "Learning Disabilities" OR "Neurodevelopmental Disorders" OR "Special Needs"</p> <p>AND</p> <p>("Adventure Education" OR "Environmental Education" OR "Experiential Learning" OR "Field Experience Programs" OR "Field Trips" OR "Outdoor Education" OR "Place Based Education")</p> <p><b>Limiters</b> - Peer Reviewed; Publication Year: 2003-2023</p>		
--	--	--	--	--

## Sortering og udvælgelse af relevante søgeresultater (Screening)

Kan dokumenteres i et flow diagram.

Download fra <http://www.prisma-statement.org/PRISMAStatement/FlowDiagram> for at redigere



\*Consider, if feasible to do so, reporting the number of records identified from each database or register searched (rather than the total number across all databases/register).

\*\*If automation tools were used, indicate how many records were excluded by a human and how many were excluded by automation tools.

From: Page MJ, McKenzie JE, Bossuyt PM, Boutron I, Hoffmann TC, Mulrow CD, et al. The PRISMA 2020 statement: an updated guideline for reporting systematic reviews. *BMJ* 2021;372:n71. doi: 10.1136/bmj.n71. For more information, visit: <http://www.prisma-statement.org/>